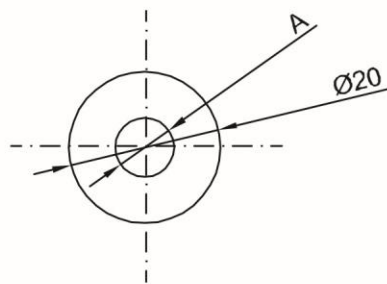
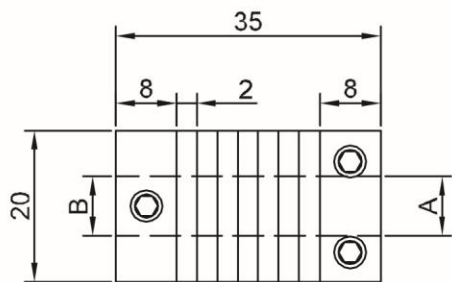


# 彈簧型-A-B 連軸器

孔徑尺寸:  $\varnothing 6 / \varnothing 7 / \varnothing 8 / \varnothing 10$  mm



A為  $\varnothing 6 / \varnothing 7 / \varnothing 8 / \varnothing 10$

B為  $\varnothing 6 / \varnothing 7 / \varnothing 8 / \varnothing 10$

單位 : mm